

# Trumpet Q3 Orchestra Audition Scales

\*8th grade students are required to play the 8th grade version of the scales.

\*\*7th grade students are required to play the 7th grade version of the scales.

\*\*\*6th grade students are required to play the 6th grade version of the scales

\*\*\*If you want to be considered for 1st part you must demonstrate your ability to play the scale marked 1st (instrument)

**All trumpets play this scale.**

D Major Scale (Concert C)



**1st trumpet**

**8th grade**

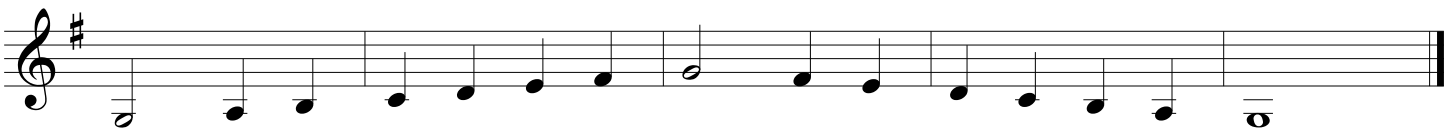
**7th grade**

G Major Scale (Concert F)



**6th grade**

G Major Scale (Concert F)



**All trumpets play this scale**

C Major Scale (Concert Bb)

