

# Violin

## Q2 Orchestra Audition Scales

\*8th grade students are required to play the 8th grade version of the scales.

\*\*7th grade students are required to play the 7th grade version of the scales.

\*\*\*6th grade students are required to play the 6th grade version of the scales

\*\*\*If you want to be considered for 1st part you must demonstrate your ability to play the scale marked 1st (instrument)

**All violins play this scale**

C Major Scale



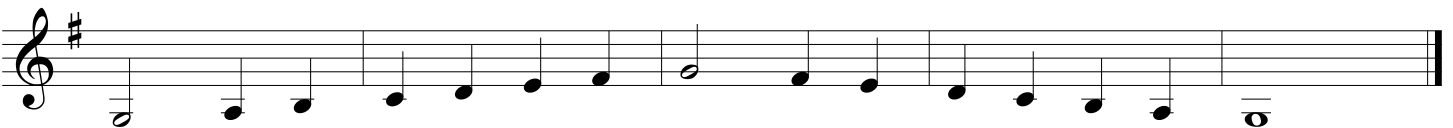
**1st violin  
8th grade  
7th grade**

G Major Scale



**6th grade**

G Major Scale



**All violins play this scale.**

D Major Scale

